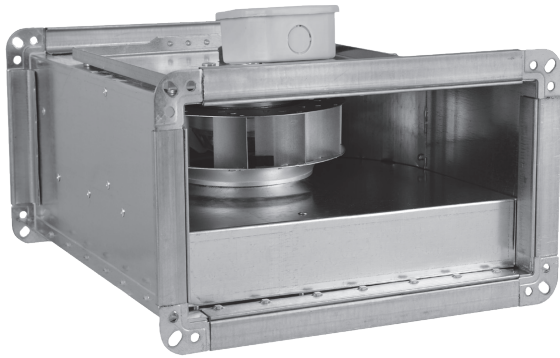


Square duct fans

# DV-SQ



## Description

This model is a square ducted fan. Square ducted fans are designed for installation medium to large areas and confined spaces. The DV-SQ square ducted fans have been designed and manufactured to provide high output, ensure reliable operation and provide easy direct connection with the ductwork.

The DV-SQ square ducted fans are intended for home, commercial and industrial ventilation systems, e.g. in bathrooms, WC, utility and technical rooms, pool rooms, engine rooms, warehouse floors, catering facilities, shopping areas, schools, office buildings, production facilities, hotels, entertainment facilities, fabrication shops, and local exhaust ventilation systems, to name a few of the potential applications.

Before installing a ducted fan on the roof, read carefully the operating and maintenance manual.

**Material:**

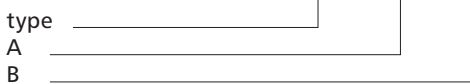
- housing: galvanized steel sheet
- rotor: galvanized steel sheet

**Insulation class:** B

**Protection rating:** IPX2

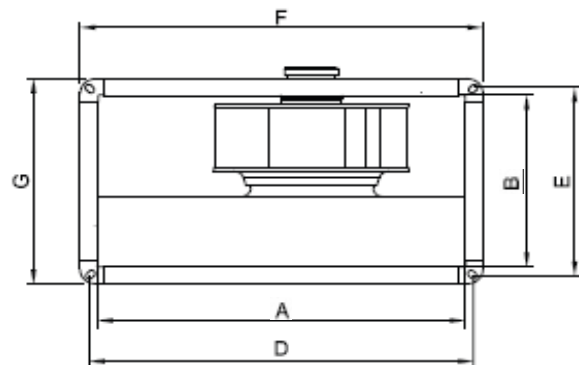
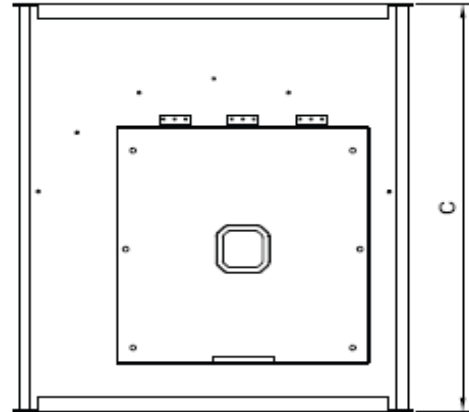
**Product code example**

Product code: **DV-SQ - aaa - bbb**



*\*Given the current EU Ecodesign of Energy Related Products Directive, the technical parameters of the fans may vary. See the specifications on the nameplate.*

## Dimensions



Type	A [mm]	B [mm]	C [mm]	D [mm]	E [mm]	F [mm]	G [mm]
DV-SQ-400-200	400	200	500	420	220	450	250
DV-SQ-600-350	600	350	760	620	370	650	400

# Square duct fans

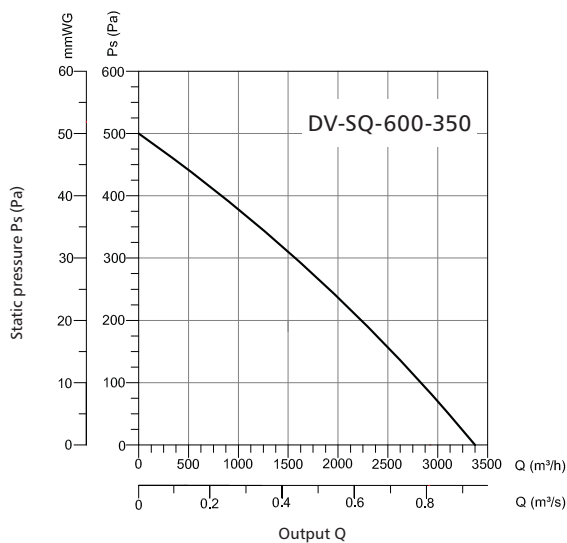
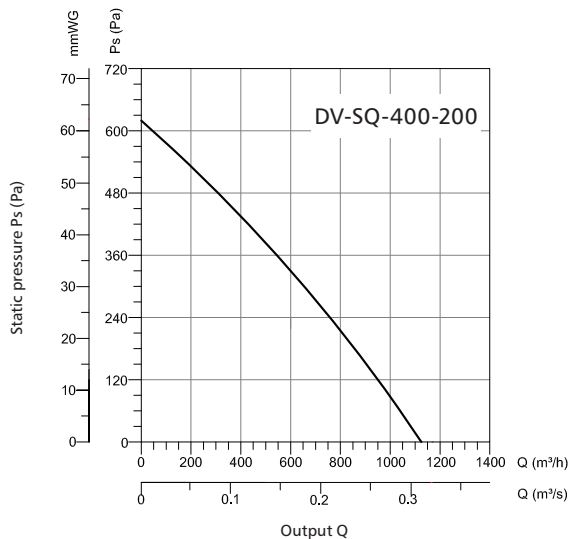
## DV-SQ

### Technical specifications

Type	Voltage (V)	Frequency (Hz)	Power (W)	Current (A)	Capacitor ( $\mu$ f)	Speed (rpm)	Air flow rate ( $m^3/h$ )	Noise level (dB(A))	Weight (kg)
DV-SQ-400-200	230	50	130	0.58	5.00	2675	1150	75	11
DV-SQ-600-350	230	50	380	1.7	8.00	1420	3400	78	32

### Charts

DV-SQ fan flow characteristics



### Energy class

Model	Noise level (dB)	Output ( $m^3/h$ )	Energy class
DV-SQ-400-200	75	1150	E
DV-SQ-600-350	78	3400	E

ENERGIA · ЕНЕРГИЯ · ΕΝΕΡΓΕΙΑ · ENERGIJA · ENERGY · ENERGIE · ENERGI

2016 1254/2014

Label details for DV-SQ-600-350:

- Energy class: E
- Noise level: 78 dB
- Output: 3400  $m^3/h$
- Manufacturer: alnor systemy wentylacji